



ASK MODULAR SYSTEM LLP



Profile....



ASK MODULAR SYSTEM LLP

ASK MODULAR SYSTEM LLP is one of the largest manufacturers of modular furniture in India with almost one decades of manufacturing experience.

The State of the art factory spreads over 3000 sq. Mtr. Of covered area equipped with the most sophisticated European machine and technology. It has skilled workforce of more than 130 people and 3000 Workstation and cabinets are manufactured every month.

Ask Modular System LLP maintains the highest quality standards with also includes the certification of, ISO 9001-2008,ISO 14001-2004, ISO 18001-2007, Green Guard Certificate, BIFMA, OHSAS, Also Registered with Factory Act and NSIC.

A fleet of in-house designers from leading design school from all over India and its association with Italian designers, ASK MODULAR SYSTEM LLP rolls out highly international range of products.

ASK MODULAR SYSTEM LLP is a perfect combination of quality expertise and experience.

ASK MODULAR SYSTEM LLP workstation are made out of best of raw materials and it uses the best accessories from leading Brands Such as Hetich, Ebco, Heffle, Johat, Rehau, Merino, Green, Action, Rehau.

ASK MODULAR SYSTEM LLP Is Also Engaged in manufacturing and trading of office Furniture chair and office sofa. Ask Modular System LLP is today one of the leading Modular Furniture & chair, manufacturers in India.

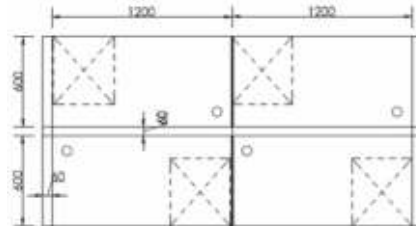
With its rich experience and expertise in the manufacturing of office Furniture & chairs with a comprehensive range of office Furniture & chair products for the domestic market under the corporate brand name of "ASK MODULAR SYSTEM LLP".

Basic Information

Company Name:ASK MODULAR SYSTEM LLP

Year Established:2006





ASK-101

Technical Specification

- 60mm Panel Based Partition Systems.
- Flat Top And End Covers.
- End Covers with Aluminium Sliding Strips.
- Aluminum Extruded Sections.
- 100mm Height Of Raceway For Data & Electrical Wiring.



ASK-102

Technical Specification

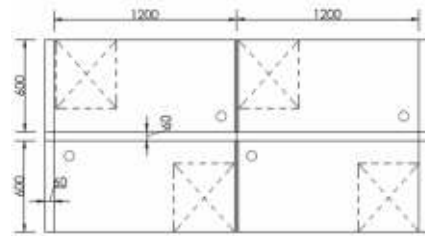
- 60mm Panel Based Partition Systems.
- Flat Top And End Covers.
- End Covers With Aluminium Sliding Strips.
- Aluminum Extruded Sections.
- 100mm Height Of Raceway For Data & Electrical Wiring.
- Working Top 900 Dia & 1050 Dia



ASK-103

Technical Specification

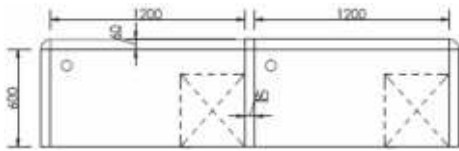
- 60mm Panel Based Partition Systems.
- Flat Top And End Covers.
- Aluminum Extruded Sections With Pinup Board.
- 100mm Height Of Raceway For Data & Electrical Wiring.



ASK-104

Technical Specification

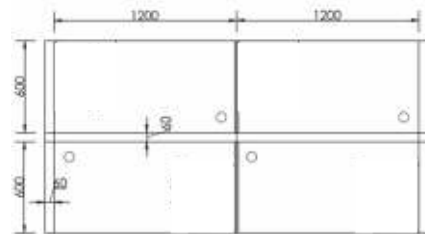
- 45mm Panel Based Partition Systems.
- Flat Top And End Covers.
- Aluminum Extruded Sections.
- 100mm Height Of Raceway For Data & Electrical Wiring.
- Provision Of Half Pinup & Half Marker Board.



ASK-105

Technical Specification

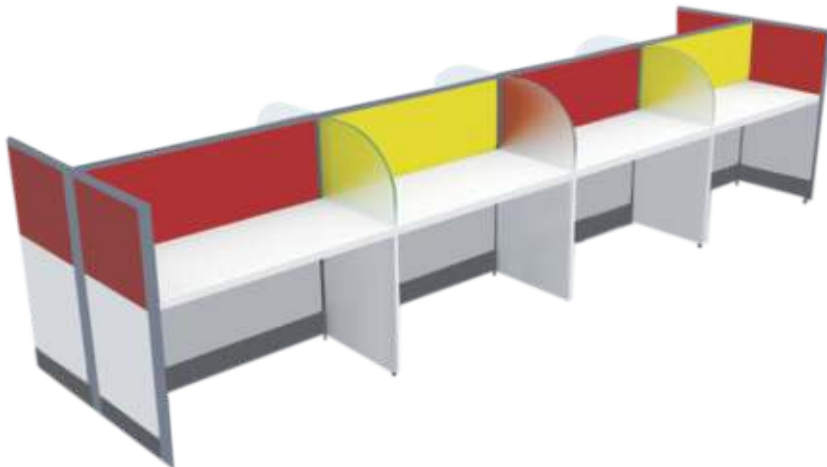
- 45mm Panel Based Partition Systems.
- Flat Top And End Covers.
- Aluminum Extruded Sections.
- 100mm Height Of Raceway For Data & Electrical Wiring.
- Provision Of Half Pinup & Half Marker Board.



ASK-106

Technical Specification

- 45mm Panel Based Partition Systems.
- Flat Top And End Covers.
- Aluminum Extruded Sections.
- 100mm Height Of Raceway For Data & Electrical Wiring.
- Provision Of 8 Mm Glass Divider.



ASK-107

Technical Specification

- 45mm Panel Based Partition Systems.
- Flat Top And End Covers.
- Aluminum Extruded Sections With Pinup Board.
- 100mm Height Of Raceway For Data & Electrical Wiring.

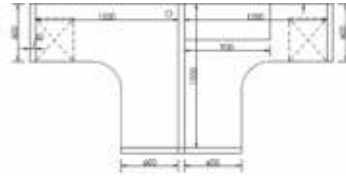




► ASK-108

Technical Specification

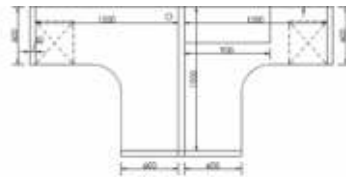
- 60mm Panel Based Partition Systems.
- Flat Top And End Covers.
- Aluminum Extruded Sections With Pinup Board.
- 100mm Height Of Raceway For Data & Electrical Wiring.



► ASK-109

Technical Specification

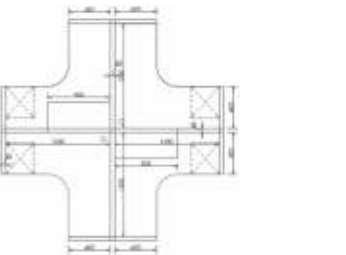
- 60mm Panel Based Partition Systems.
- Flat Top And End Covers.
- Aluminum Extruded Sections With Pinup Board.
- 100mm Height Of Raceway For Data & Electrical Wiring.



► ASK-110

Technical Specification

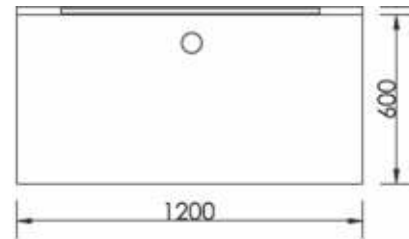
- 60mm Panel Based Partition Systems.
- Flat Top And End Covers.
- Aluminum Extruded Sections With Pinup Board.
- 100mm Height Of Raceway For Data & Electrical Wiring.



► ASK-111

Technical Specification

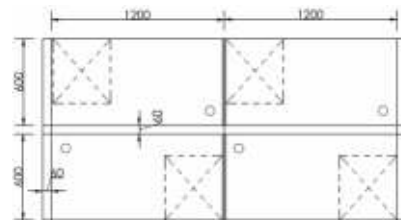
- 32mm Panel Based Partition Systems.
- Flat Top And End Covers.
- Provision of Metal Powder Coated Eye Leg.
- Aluminum Extruded Sections With Pinup Board.
- 100mm Height Of Raceway For Data & Electrical Wiring.



▶ ASK-112

Technical Specification

- Linear Desk Based System With Laker Glass Screen.
- Metal Powder Coated Square 50mm X 50mm Frame Leg.
- Metal Raceway Provision Below The Work Top For Data & Electrical Wiring.



▶ ASK-113

Technical Specification

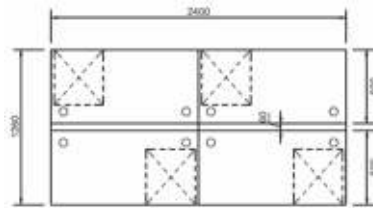
- Desk Based System With 25mm Screen & Side Glass.
- Metal Powder Coated Square 50mm X 50mm Frame Leg.
- Metal Raceway Provision Below The Work Top For Data & Electrical Wiring.



▶ ASK-114

Technical Specification

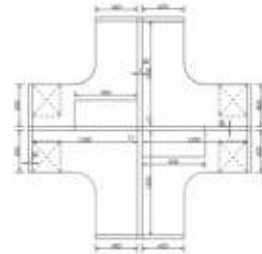
- Back To Back Desk Based System With Laker Glass Screen.
- Metal Powder Coated Square 50mm X 50mm Frame Leg.
- Metal Raceway Provision Below The Work Top For Data & Electrical Wiring.



► ASK-115

Technical Specification

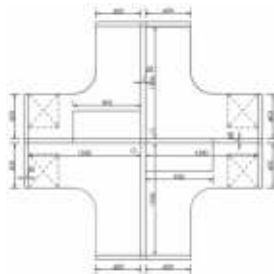
- 4 Ft. Height 60mm Panel Based Partition Systems.
- Metal Powder Coated Square 50mm X 50mm Frame Leg.
- End Covers With Plastic Sliding Strips.
- Aluminum Extruded Sections With Pinup Board.
- 100mm Height Of Raceway For Data & Electrical Wiring.



► ASK-116

Technical Specification

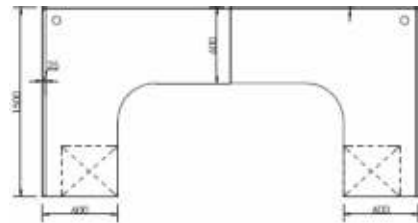
- 4 Ft. Height 60mm Panel Based Partition Systems.
- Powder Coated & Chrome Loop Leg.
- End Covers With Plastic Sliding Strips.
- Aluminum Extruded Sections With Pinup Board.
- 100mm Height Of Raceway For Data & Electrical Wiring.



► ASK-117

Technical Specification

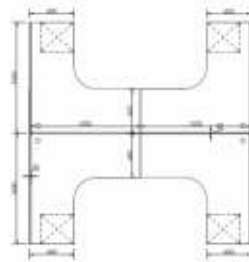
- Desk Based System With 25mm Screen & Laker Glass On Top.
- Powder Coated Flat Loop Leg.
- Metal Raceway Provision Below The Work Top For Data & Electrical Wiring.



► ASK-118

Technical Specification

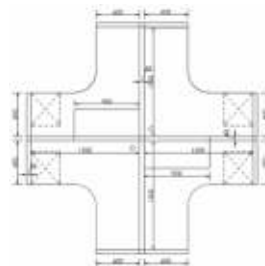
- Desk Based System With 45mm Screen.
- Metal Powder Coated Square 50mm X 50mm Frame Leg.
- Metal Raceway Provision Below The Work Top For Data & Electrical Wiring.



► ASK-119

Technical Specification

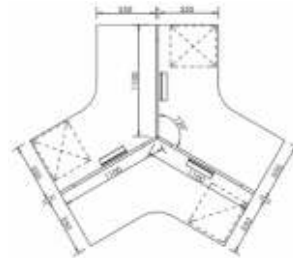
- Desk Based System With 25mm Screen.
- Metal Powder Coated Square 50mm X 50mm Frame Leg with Metal Modesty.
- Metal Raceway Provision Below The Work Top For Data & Electrical Wiring.



► ASK-120

Technical Specification

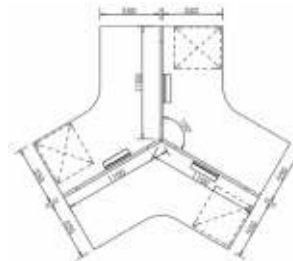
- Desk Based System With 45mm Screen.
- Metal Powder Coated Square 50mm X 50mm Frame Leg.
- Metal Raceway Provision Below The Work Top For Data & Electrical Wiring.



► ASK-121

Technical Specification

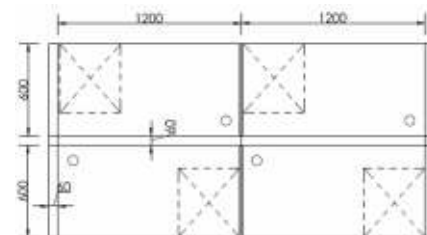
- Desk Based System With 25mm Screen.
- Metal Powder Coated Square 50mm X 50mm Frame Leg.
- Metal Raceway Provision Below The Work Top For Data & Electrical Wiring.



► ASK-122

Technical Specification

- Desk Based System With 25mm Screen.
- Metal Powder Coated Square 50mm X 50mm Frame Leg with Metal Modesty.
- Metal Raceway Provision Below The Work Top For Data & Electrical Wiring.



► ASK-123

Technical Specification

- Desk Based System With 45mm Screen.
- Metal Powder Coated Square 50mm X 50mm Frame Leg.
- Metal Raceway Provision Below The Work Top For Data & Electrical Wiring.



ASK-124



ASK-125



ASK-126



ASK-127



ASK-128



ASK-129



ASK-130



ASK-131



ASK-132



ASK-133



ASK-134



ASK-135



ASK-136



ASK-137



ASK-138



ASK-139



ASK-140



ASK-141



ASK-142



ASK-143



ASK-144



ASK-145



ASK-146



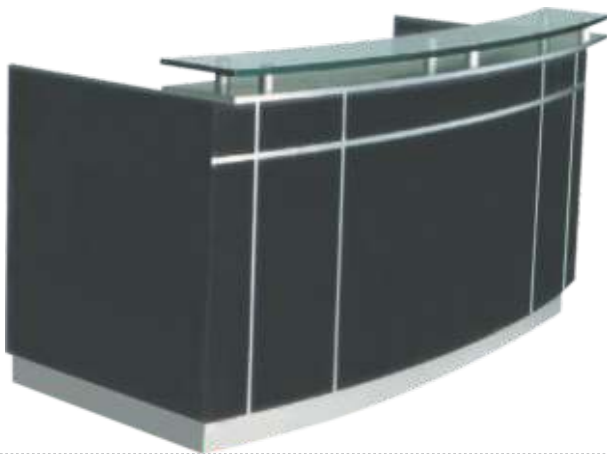
ASK-147



ASK-148



ASK-149



ASK-150



ASK-151



ASK-152



ASK-153



ASK-154



ASK-155



ASK-156



ASK-157



ASK-158



ASK-159



ASK-160



ASK-161



ASK-162



ASK-163



ASK-164



ASK-165



ASK-166



ASK-167



ASK-168



ASK-169



ASK-170



ASK-171



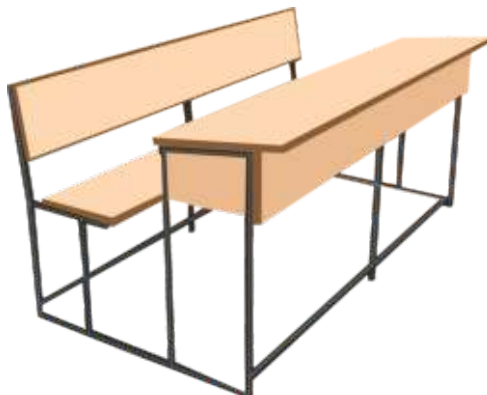
ASK-172



ASK-173



ASK-174



ASK-175



ASK-176



ASK-177



ASK-178



ASK-179



ASK-180



ASK-181



ASK-182



ASK-183



ASK-184



ASK-185



ASK-186



ASK-187



ASK-188



ASK-189



ASK-190



ASK-191



ASK-192



ASK-193



ASK-194



ASK-195



ASK-196



ASK-197



ASK-198



ASK-199



ASK-200



ASK-201



ASK-202



ASK-203



ASK-204



ASK-205



ASK-206



ASK-207



ASK-208



ASK-209



ASK-210



ASK-211



ASK-212



ASK-213



ASK-214



ASK-215



ASK-216



ASK-217



ASK-218



ASK-219



ASK-220



ASK-221



ASK-222



ASK-223



ASK-224



ASK-225



ASK-226



ASK-227



ASK-228



ASK-229



ASK-230



ASK-231



ASK-232



ASK-233



ASK-234



ASK-235



ASK-236



ASK-237



ASK-238



ASK-239



ASK-240



ASK-241



ASK-242



ASK-243



ASK-244



ASK-245



ASK-246



ASK-247



ASK-248



ASK-249



ASK-250



ASK-251



ASK-252



ASK-253



ASK-254



ASK-255



ASK-256



ASK-257



ASK-258



ASK-259



ASK-260



ASK-261



ASK-262



ASK-263



ASK-264



ASK-265



ASK-266



ASK-267



ASK-268



ASK-269



ASK-270



ASK-271



ASK-272



ASK-273



ASK-274



ASK-275



ASK-276



ASK-277



ASK-278



ASK-279



ASK-280



ASK-281



ASK-282



ASK-283



ASK-284



ASK-285

VISITOR SERIES



ASK-286



ASK-287



ASK-288



ASK-289



ASK-290



ASK-291



ASK-292



ASK-293



ASK-294

CAFETERIA SERIES



ASK-295



ASK-296



ASK-297



ASK-298



ASK-299



ASK-300



ASK-301



ASK-302



ASK-303



ASK-304



ASK-305



ASK-306



ASK-307



ASK-308



ASK-309



ASK-310



ASK-311



ASK-312



ASK-313



ASK-314



ASK-315



ASK-316



ASK-317



ASK-318



ASK-319



ASK-320



ASK-321



ASK-322



ASK-323



ASK-324



ASK-325



ASK-326



ASK-327



ASK-328



ASK-329



ASK-330



ASK-331



ASK-332



ASK-333



ASK-334



ASK-335



ASK-336



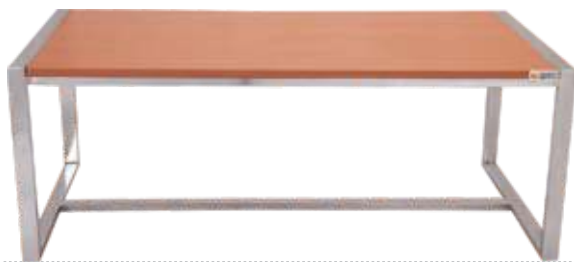
ASK-337



ASK-338



ASK-339



ASK-340



ASK-341



ASK-342



ASK-343



ASK-344



ASK-345

Project....



IRIS SOFTWARE SECTOR 142 NOIDA



INDIAN EXPRESS NOIDA



INDIAN EXPRESS NOIDA



SERCO KOLKATA



STELLAR IT PARK, NOIDA



SA INFRA, NOIDA



SERCO



VARDHMAN



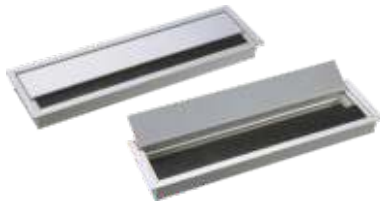
Our Reputed Client



& Many More Valuable Customer.....



ASK-346



ASK-347



ASK-348



ASK-349



ASK-350



ASK-351



ASK-352



ASK-353



ASK-354



ASK-355

Web : www.askmodular.com

Authorised Dealer



Design & Specifications are subject to change without prior notice.



ASK MODULAR SYSTEM LLP

Works : G-18, Sector-11, Noida-201301, Distt. Gautam Budh Nagar (U.P.),INDIA

Mob : +91-9999106822, **Ph.:** +91-1204114645,

E-mail : askmodular@gmail.com,